



# Iso Analytics, Inc.

6135 NW 167 Street  
Suite E 15  
Miami Lakes, FL 33015  
(954) 378-2517

ISO ANALYTICS testing@isoanalytics.org



# Analysis Report

Client **Mary Jane Carts**

Batch # **GS-118358**

Test Reg State **Florida**

Batch Date **1/14/2022**

Production Facility **DelCann Oil**

Extracted from **Hemp**

Production Date **1/14/2022**

Sample Name **Delta 8 Vape Cartridge**

Order Date **1/17/2022**

Sample Type **Inhalable**

Date Received **1/18/2022**

Sample ID **IA-12897**

Lab Batch Date **1/18/2022**

Initial Gross Weight **1**

Date Completed **1/19/2022**

## Potency Summary

<b>Total Delta 8</b> 92.46%	<b>Total THC</b> None Detected
<b>Total Delta 9</b> None Detected	<b>Total Delta 10</b> None Detected
<b>Total CBG</b> None Detected	<b>Total CBD</b> None Detected
<b>Total CBN</b> 2.27%	<b>Total Cannabinoids</b> 94.73%



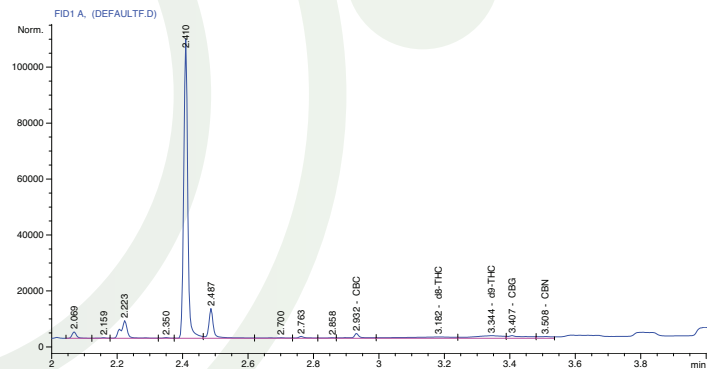
Product Image

## Cannabinoid Profile Tested by GC/FID

### Potency 12 Test

Analyte	LOD %	LOQ %	Result (mg/g)	Result (%)
<b>Δ8-THC</b>	0.000	0.001	924.6	92.46
<b>Δ9-THC</b>	0.000	0.001	0.000	<LOQ
<b>Δ10-THC</b>	0.000	0.001	0.000	<LOQ
<b>CBC</b>	0.000	0.001	0.000	<LOQ
<b>CBD</b>	0.000	0.001	0.000	<LOQ
<b>THCV</b>	0.000	0.001	0.000	<LOQ
<b>THCA-A</b>	0.000	0.001	0.000	<LOQ
<b>CBN</b>	0.000	0.001	22.700	2.27
<b>CBGA</b>	0.000	0.001	0.000	<LOQ
<b>CBG</b>	0.000	0.001	0.000	<LOQ
<b>CBDV</b>	0.000	0.001	0.000	<LOQ
<b>CBDA</b>	0.000	0.001	0.000	<LOQ

### Chromatogram



ND = Not Detected; NT = Not Tested; LOD = Limit of Detection;  
LOQ = Limit of Quantitation; RL = Reporting Limit; Δ = Delta;  
Total Δ9-THC = Δ9-THCA \* 0.877 + Δ9-THC; Total CBD = CBDA \* 0.877 + CBD

## ISO ANALYTICS, INC.

This sample has been tested by Iso Analytics, Inc. using valid testing methodologies and a quality system. Values reported relate only to the sample tested. Iso Analytics, Inc. makes no claims as to the efficacy, safety or other risks associated with any detected or non-detected levels of any compounds reported herein. This Report shall not be reproduced except in full, without the written approval of Iso Analytics, Inc.

Charles Lewis, PhD  
Chief Scientist  
Iso Analytics, Inc.